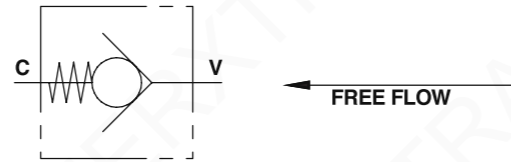


## CHECK VALVES



HYDRAULIC DIAGRAM



**USE AND OPERATION:**

Check valves allow free flow in one direction and blocks the flow in the reverse direction, used to keep a hydraulic system pressurised.

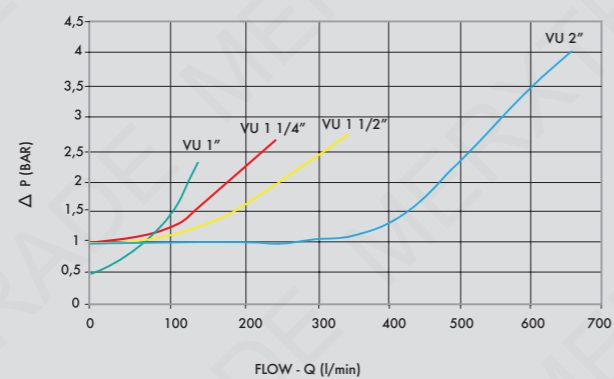
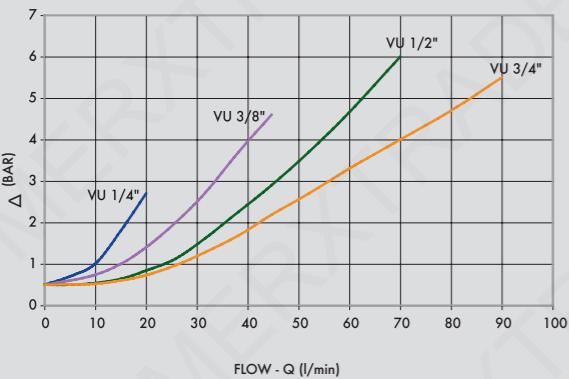
**MATERIALS AND FEATURES:**

Body: zinc-plated steel.  
Internal parts: hardened and ground steel. Leakage: guided poppet - no leakage.

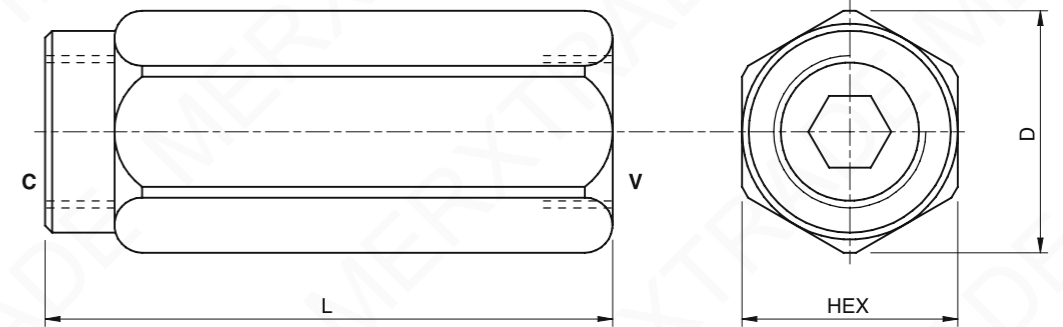
**CONNECTIONS:**

Connect V to the supply and C to the function. Flow is free from V to C and blocked in the reverse direction.

Oil temperature: 50° C - Oil viscosity: 30 cSt



TYPE	MAX FLOW Lt. / min	MAX PRESSURE Bar	STANDARD CRACKING PRESSURE Bar
VU 1/8"	3	350	0,4/0,7
VU 1/4"	20	350	0,4/0,7
VU 3/8"	45	350	0,4/0,7
VU 1/2"	70	350	0,4/0,7
VU 3/4"	110	350	0,4/0,7
VU 1"	160	350	0,4/0,7
VU 1 1/4"	250	300	0,7/1
VU 1 1/2"	350	300	0,7/1
VU 2"	650	300	0,4/0,7



TYPE	V - C GAS	L mm	HEX mm	D mm	WEIGHT kg
VU 1/8"	G 1/8"	44	14	16	0,038
VU 1/4"	G 1/4"	62	19	21	0,104
VU 3/8"	G 3/8"	68	24	26,5	0,184
VU 1/2"	G 1/2"	77	30	34	0,322
VU 3/4"	G 3/4"	88	36	40	0,492
VU 1"	G 1"	105	41	46	0,676
VU 1 1/4"	G 1 1/4"	135	55	63	1,646
VU 1 1/2"	G 1 1/2"	145	60	69	1,950
VU 2"	G 2"	150	70	80	2,726